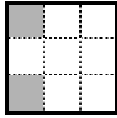
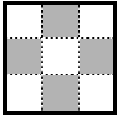
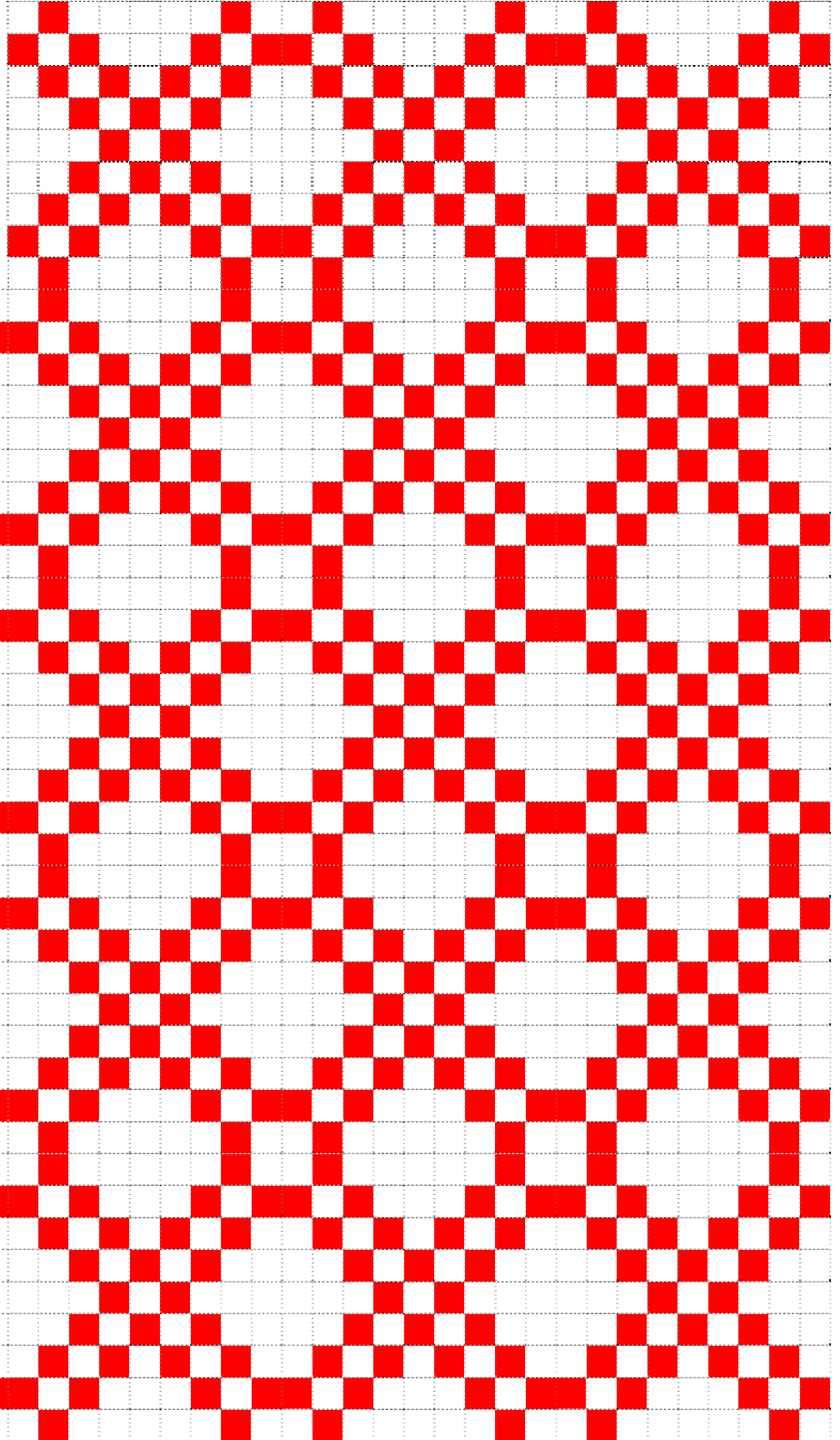
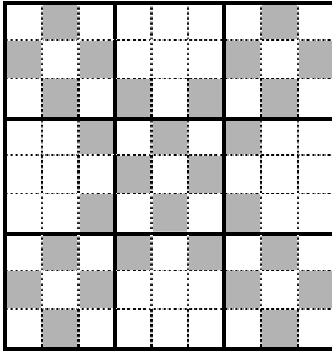


Double Nine Patch Irish Chain Quilt

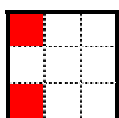
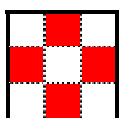
Pattern based on the quilt made by **Laura Ingalls Wilder and Rose Wilder Lane**, on display at the **Laura Ingalls Wilder Museum, 330 Eighth Street, Walnut Grove, Minnesota 56180.**



The original is pieced in bleached muslin and turkey red cotton in double nine-patch blocks. Only two basic blocks are used in the entire quilt, each composed of nine two-inch square "patchwork" pieces (seam allowances not included). The finished quilt top measures approximately 72 by 90 inches, was backed using matching muslin, and was quilted in parallel diagonal lines across the center of each square.



To reproduce Laura's quilt, you will need 560 red squares and 1060 muslin ones. Cut each square 2.5 inches to allow for 1/4-inch seam allowances. For the quilt top above, piece 180 nine-patch blocks: 100 nine-patch blocks using 5 muslin and 4 red squares (below left) and 80 nine-patch blocks using 7 muslin and 2 red squares (below right):



Nine nine-patch blocks (81 squares) are sewn together to form a larger block (see upper left hand portion of quilt pattern above for configuration and orientation of blocks). Twenty such larger blocks are sewn together to complete the quilt top. Check with your local quilt or fabric shop for fabric requirements, but note that one square yard of fabric yields up to 196 2.5-inch squares.